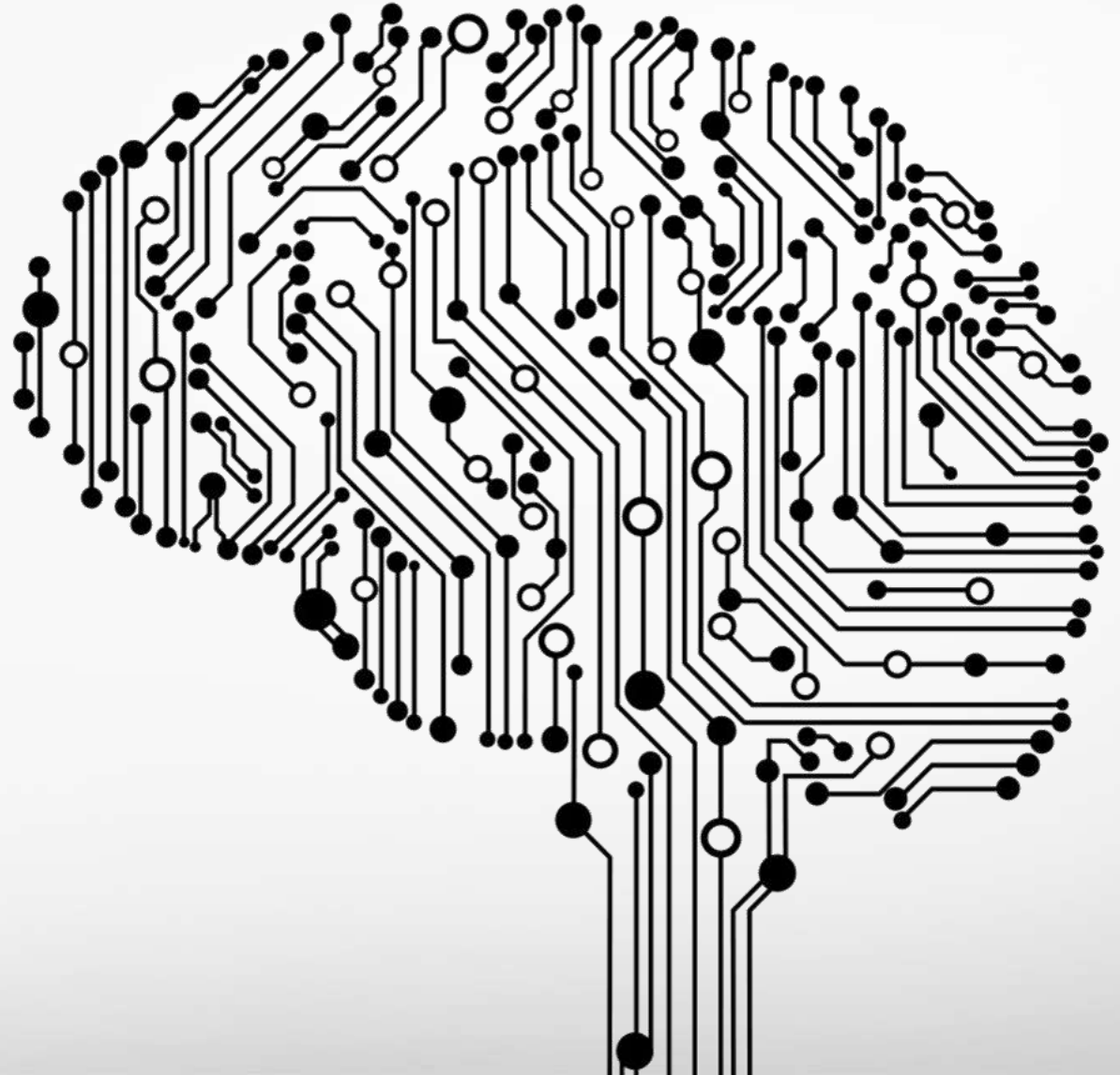


# The New AI

How Microsoft is building the new wave of intelligent computing

Rui Carmo

Cloud Solution Architect



“

THE WORLD AND TECHNOLOGY ARE  
ONCE AGAIN TRANSFORMING.  
COMPUTERS MAY WIN AT GAMES,  
BUT IMAGINE WHAT'S POSSIBLE WHEN HUMAN AND  
MACHINE WORK TOGETHER TO SOLVE SOCIETY'S  
GREATEST CHALLENGES LIKE BEATING DISEASE,  
IGNORANCE, AND POVERTY.

”

---

**SATYA NADELLA**  
[ CEO, MICROSOFT ]



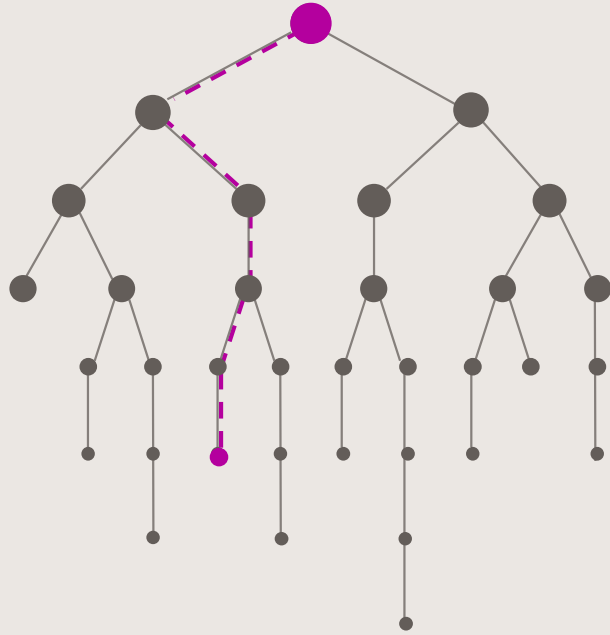


A black and white aerial photograph of Hong Kong, showing a dense urban landscape with numerous skyscrapers and a large harbor filled with ships. The sky is filled with dramatic, dark, and swirling clouds, creating a sense of tension and change. The text "THE WORLD HAS CHANGED" is overlaid in the center in a bold, purple font.

**THE WORLD HAS CHANGED**

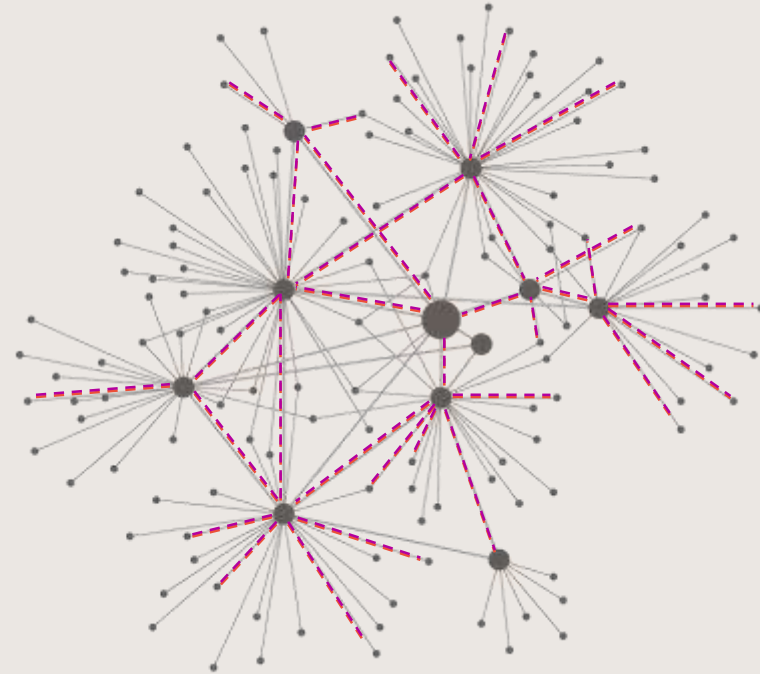
# THE WORLD IS NOW A NETWORK





TRADITIONAL HIERARCHIES

**INFORMATION MOVES SLOWLY  
FROM CENTRAL POINTS**



RESPONSIVE NETWORKS

**INFORMATION TRAVELS FAST  
LEARN AND ADAPT**



## HOW MICROSOFT IS ADAPTING



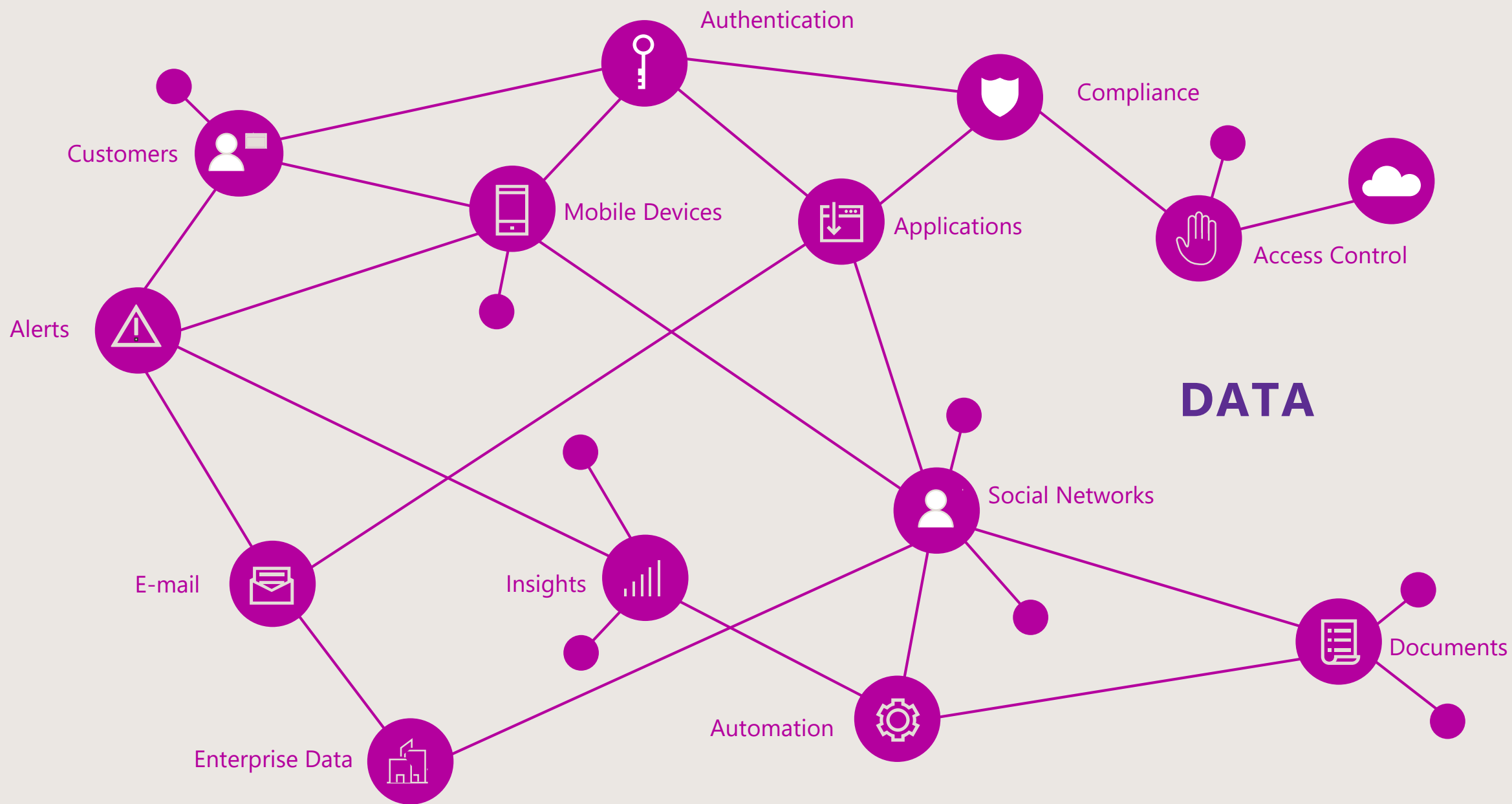
**PLATFORM**



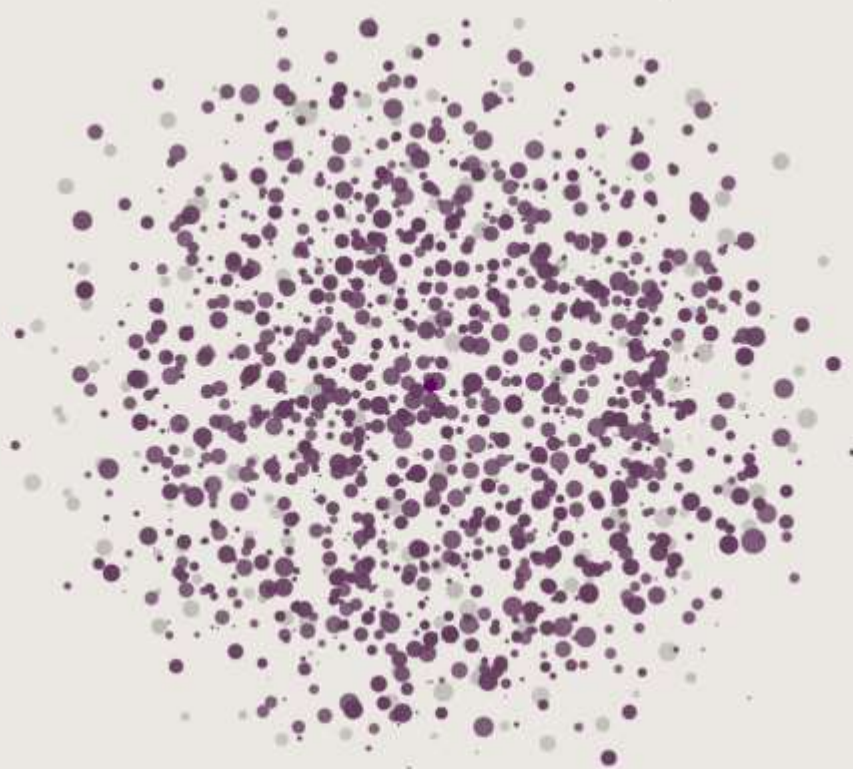
**INTELLIGENCE**



**PARTNERS**



# ENABLING INTELLIGENCE AT SCALE



BIG DATA &  
ANALYTICS



INTELLIGENT  
ALGORITHMS



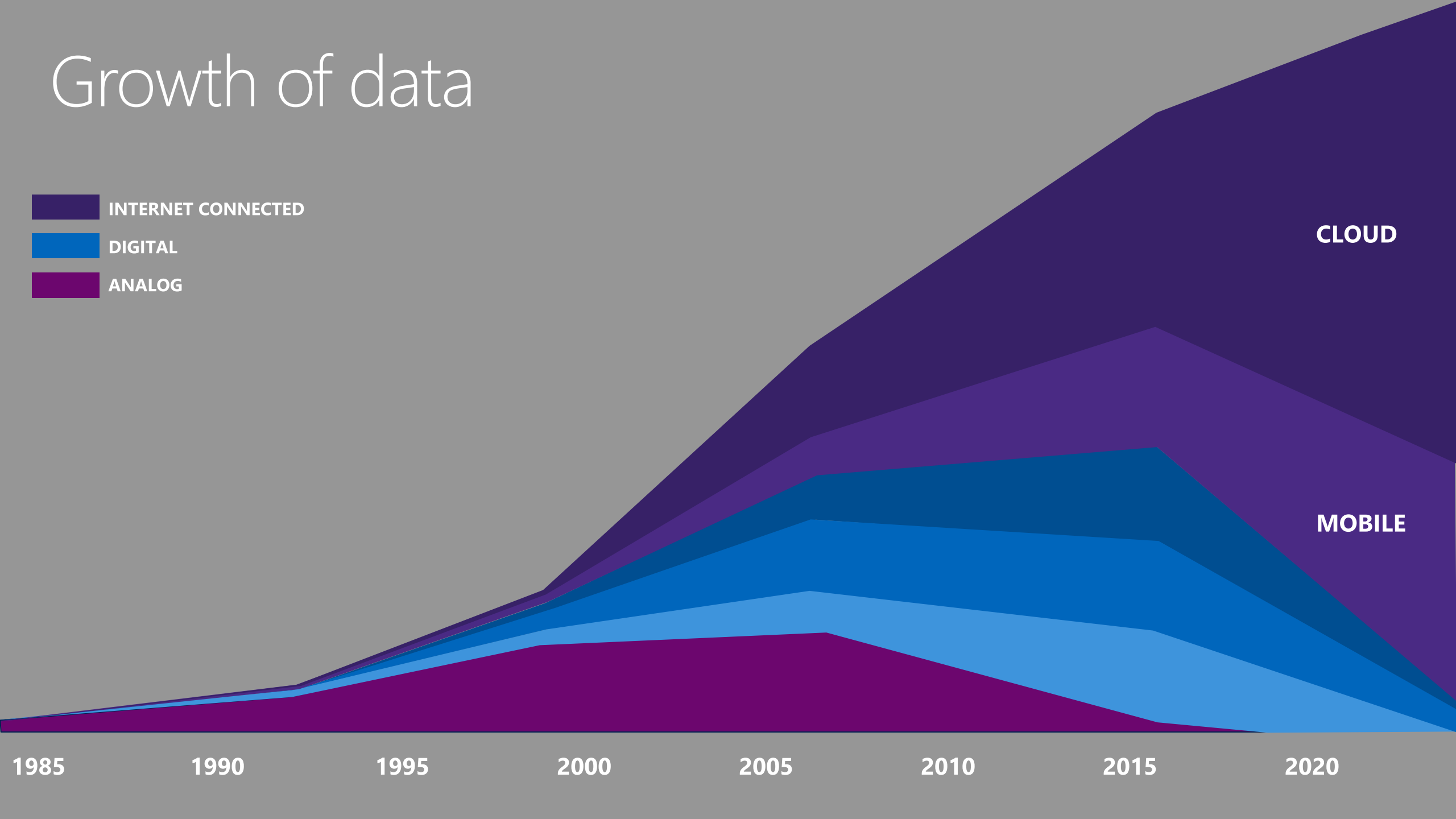
CLOUD  
COMPUTING



# BIG DATA & ANALYTICS



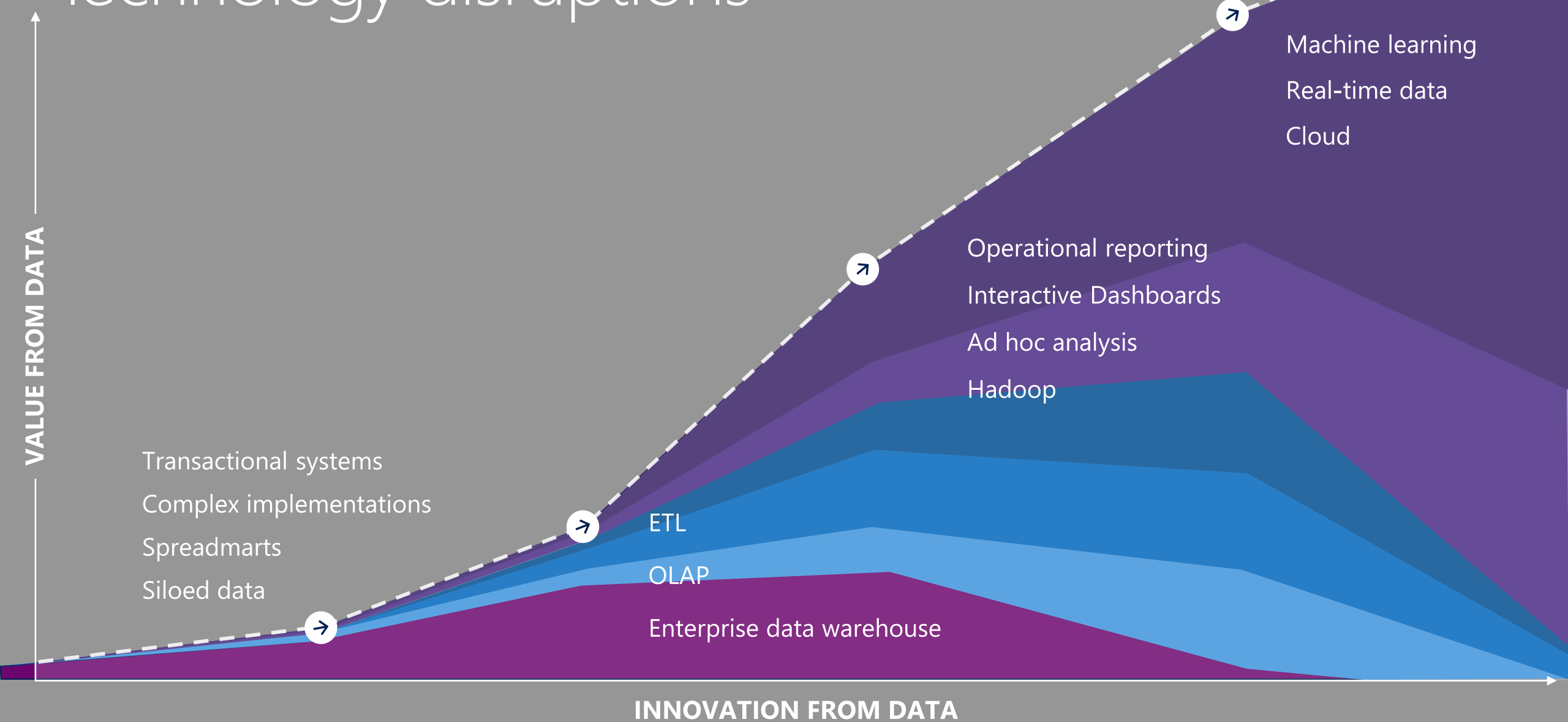
# Growth of data



CLOUD

MOBILE

# Technology disruptions





# TOKYO HARBOR - INNOVATIVE SITUATIONAL AWARENESS & PREDICTIVE INTELLIGENCE ON AZURE IoT/ML



#ARC307

POWERED BY POWER MAP FOR EXCEL



# TOKYO HARBOR - INNOVATIVE SITUATIONAL AWARENESS & PREDICTIVE INTELLIGENCE ON AZURE IoT/ML



#ARC307

A black and white aerial photograph of the Hong Kong skyline, featuring a dense cluster of skyscrapers in the foreground and middle ground, with the Victoria Harbour in the center. The sky is filled with dramatic, swirling clouds. The text "INTELLIGENT CLOUD" is overlaid in the center in a bold, purple font.

# INTELLIGENT CLOUD

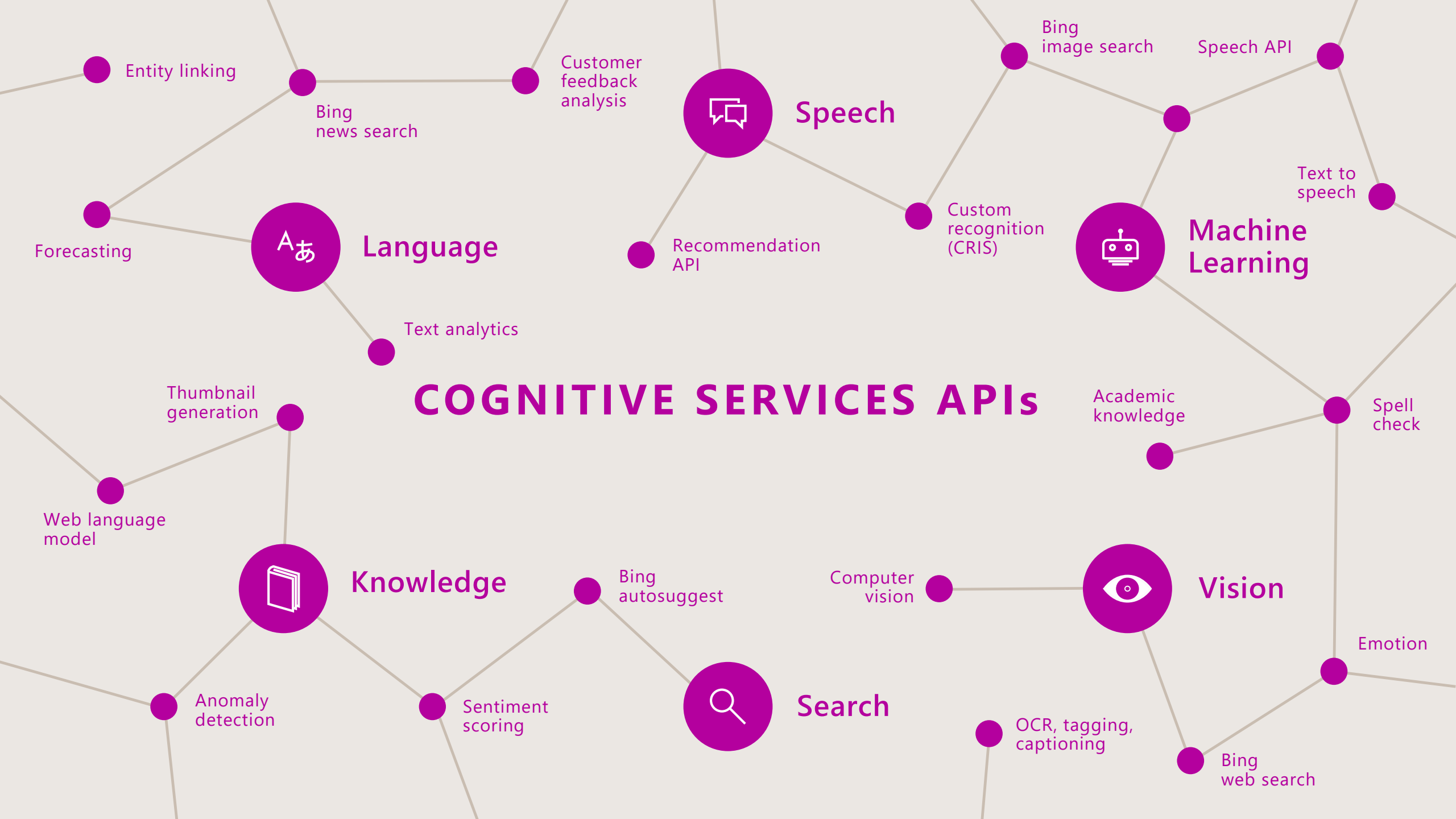












## 1990s: **Internet**

- Search
- User "visits" websites

## The future: **Conversations**

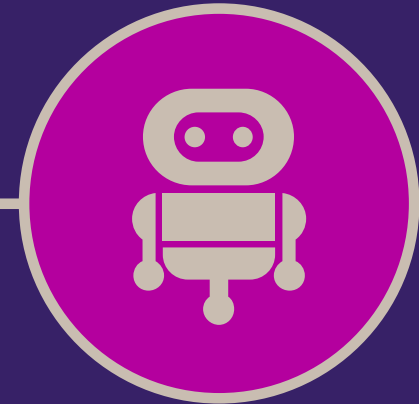
- Natural language between people and technology
- Conversational canvas
- Bots and agents

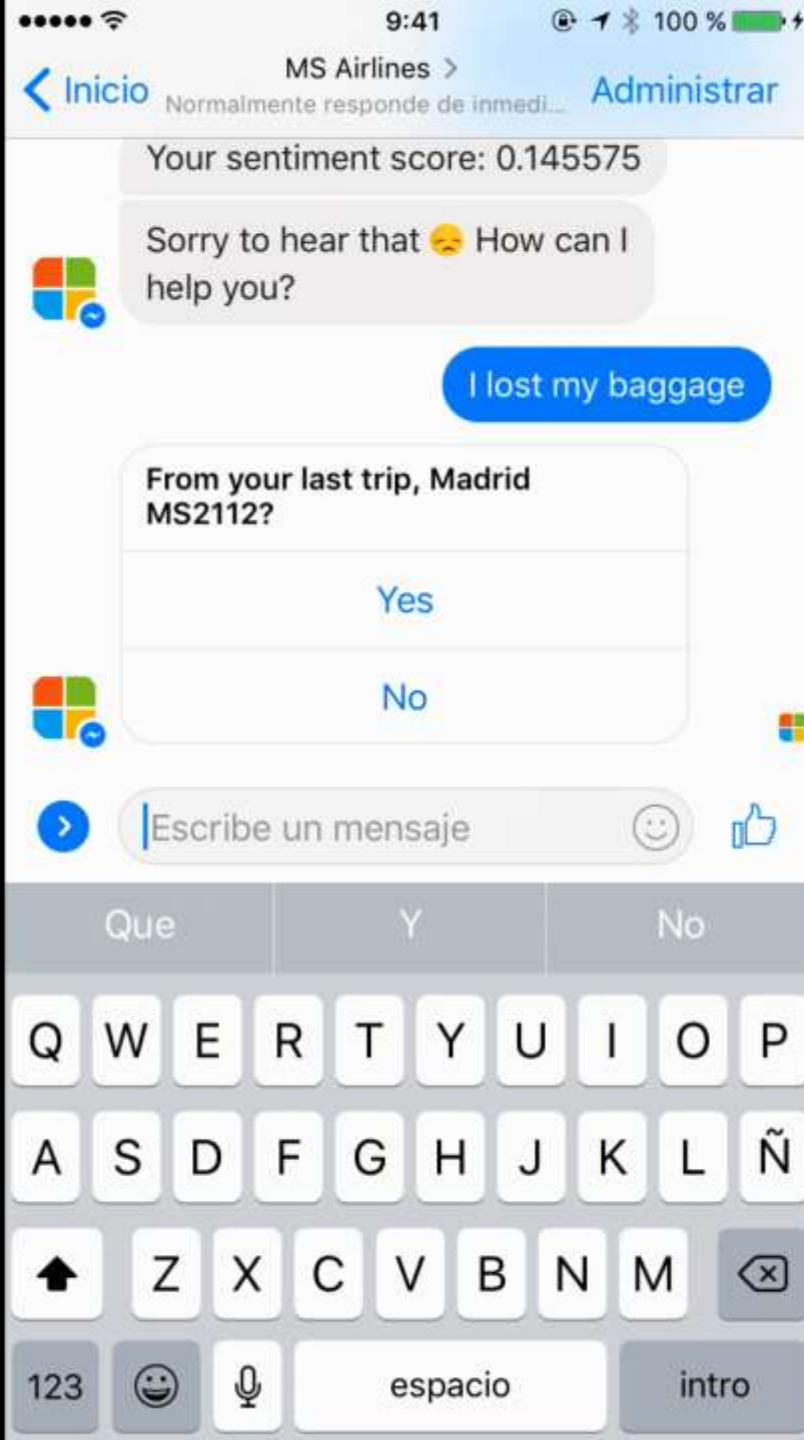
## 1980s: **PC**

- Desktop

## 2000s: **Mobile**

- Social
- User download apps from App Stores





Luggage is still in distribution, I think we can do something.

Do you prefer to give me a new address or your current location?

New address

Current location



Current location

Great, if you send me your location it will share it with the driver.



Factory San Sebastián de los Rey...

Toca para ver en el mapa



Aa







MENSAJES

ahora

**+1 (425) 409-2626**  
Your OTP code: 975036

Is that correct?

Yes

No



Yes

I've just sent you a code to your phone number. Could you please tell me what it is?



9



«9»

1 2 3 4 5 6 7 8 9 0

- / : ; ( ) € & @ "

#+= . , ? ! ' < >

ABC



espacio

intro

Our appologies for the inconvenience that we've caused, in compensation we would like to offer you an access code for our Madrid Barajas VIP room for your next flight.





**PLATFORM**



**INTELLIGENCE**



**PARTNERS**



**PARTNERS**



